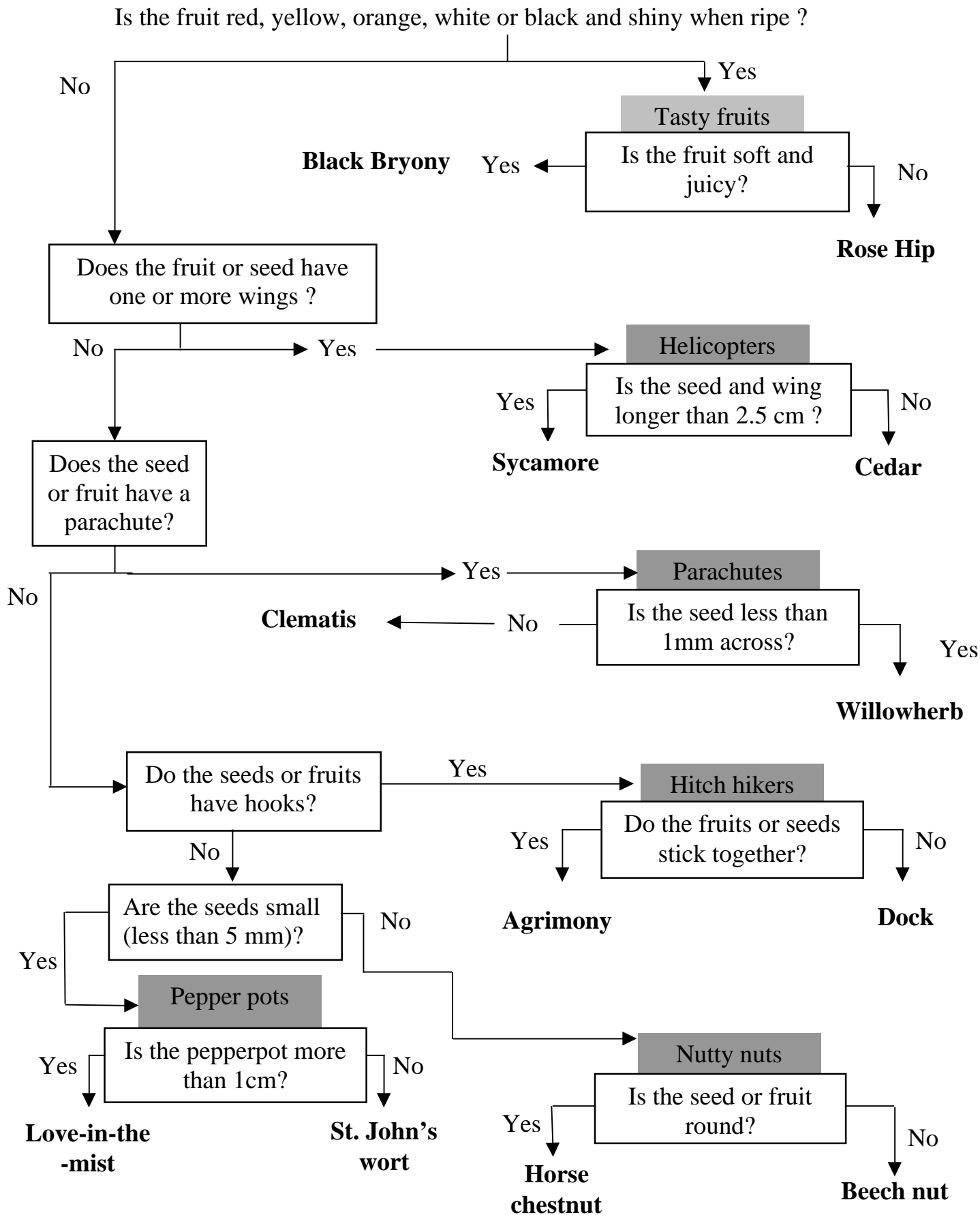


**Example of a Key constructed from a Character Table  
Key to fruits by Year 5, Ursuline Preparatory School**



FSC and SAPS wish to thank the teachers (Mrs L Calvert and Ms R Adams) and pupils from Ursuline Preparatory School, 18 The Downs, Wimbledon SW20 8HR, for permission to include their key on the SAPS website and to share their ideas with you. This key, together with the worksheets that contributed to it, gives a useful example of a possible outcome of this activity.